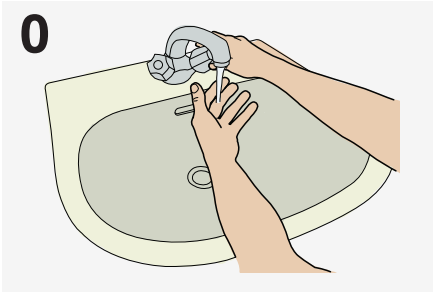


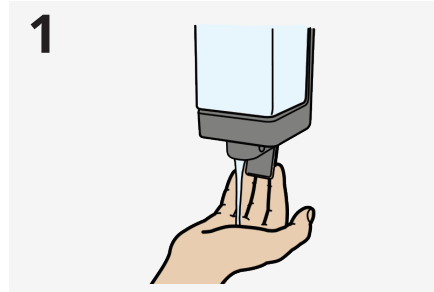
# How to Handwash

**WASH HANDS WHEN VISIBLY SOILED! OTHERWISE, USE HANDRUB**

**Duration of the entire procedure: 40 - 60 seconds**



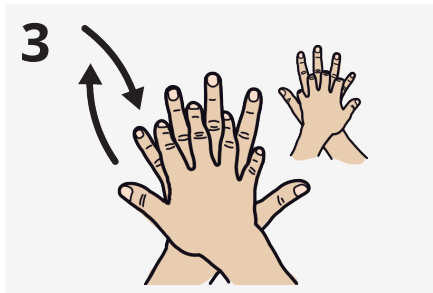
Wet hands with water



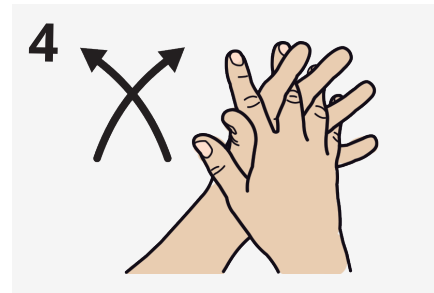
Apply enough soap to cover all hand surfaces



Rub hands palm to palm



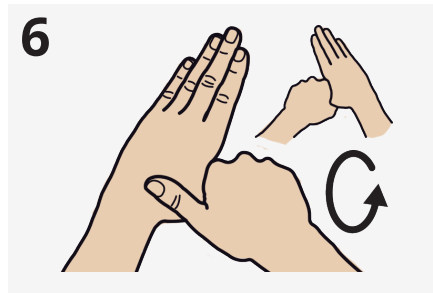
Right palm over left dorsum with interlaced fingers and vice versa



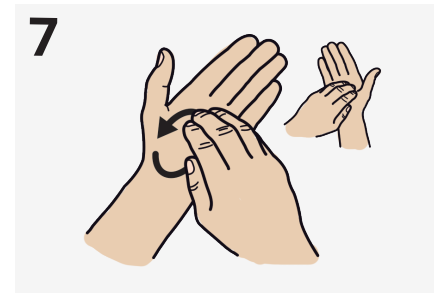
Palm to palm with fingers interlaced



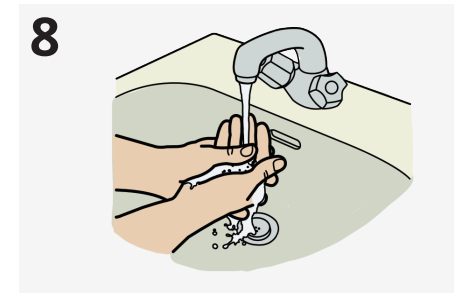
Back of fingers to opposing palms with fingers interlocked



Rotational rubbing of left thumb clasped in right palm and vice versa



Rotational rubbing, backwards and forwards with clasped fingers of right hand in left palm and vice versa



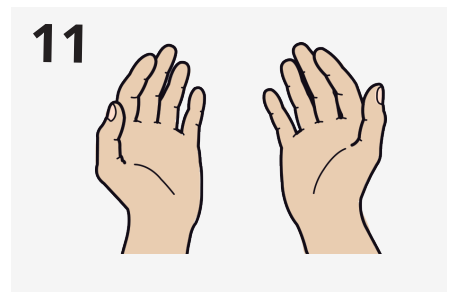
Rinse hands with water



Dry hands thoroughly with a single towel



Use towel to turn off faucet



Your hands are now safe